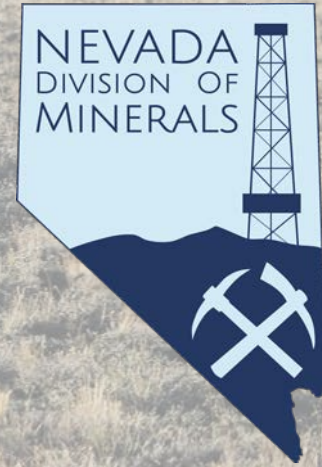


*Development of the Nevada
Alternative Withdrawal Area
boundaries for the BLM Mineral
Withdrawal EIS*

NMEC ANNUAL MEETING RENO, NV
October 16, 2016

Richard Perry, Administrator, NDOM

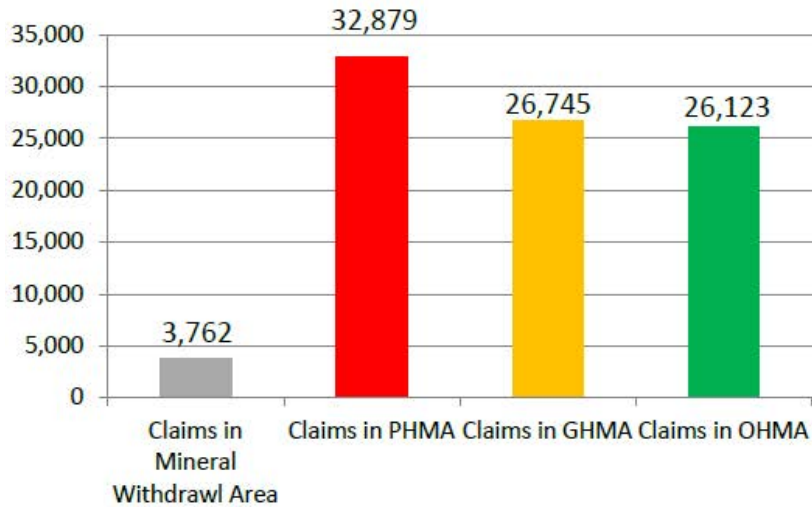




Chronology of Mineral Withdrawal

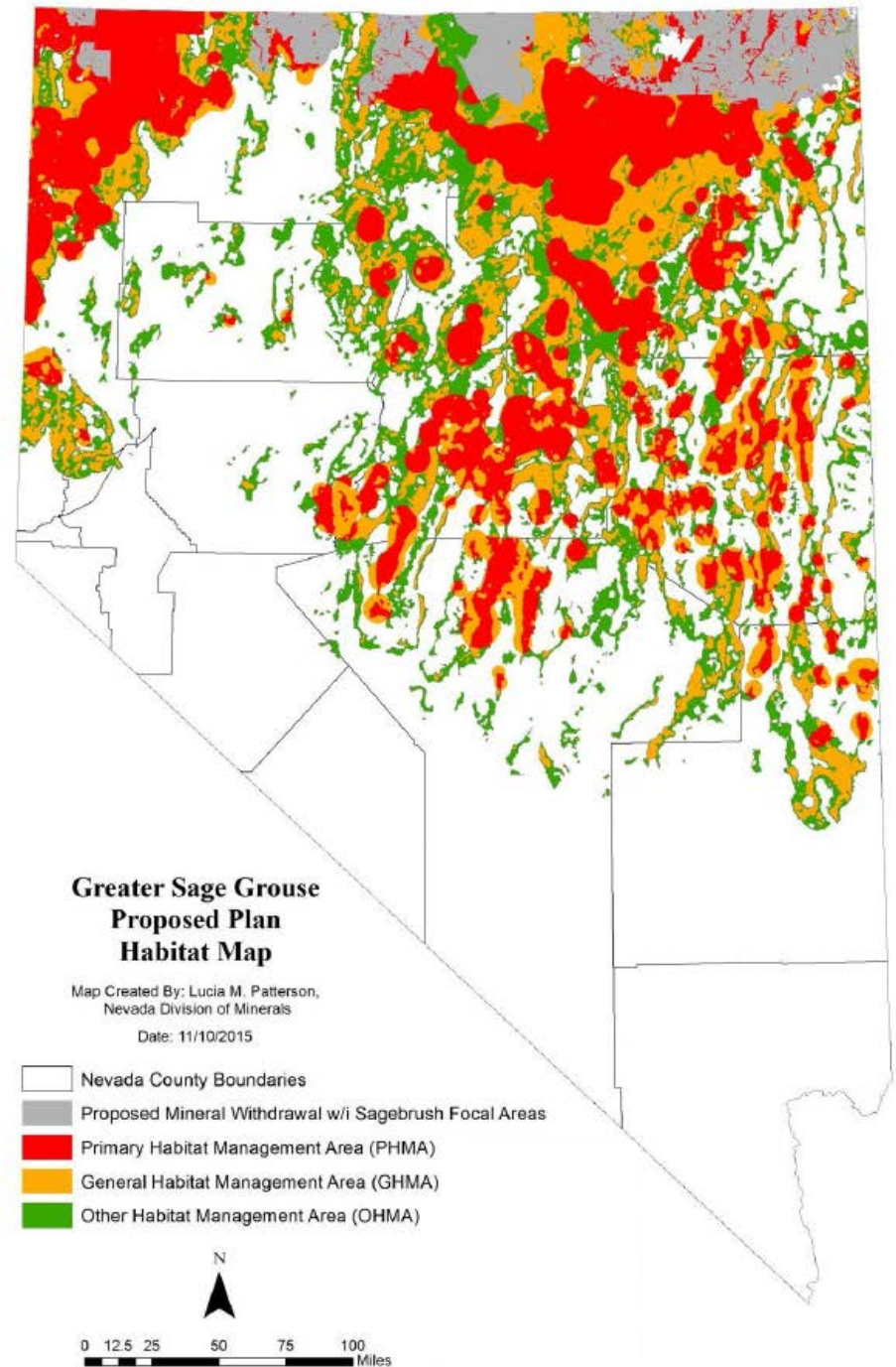
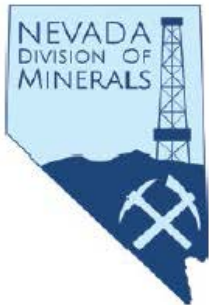
- BLM issues Record of Decision on “ Nevada and NE CAL Greater Sage Grouse FEIS and LUPA”
 - Eliminates oil/gas, geothermal and wind energy projects on almost 2.8 million acres of NV along Idaho border
 - Segregates same 2.7 M acres (called the Sagebrush Focal Areas) to new mineral claims. Existing claims valid, but a mineral analysis would be needed if ultimately removed. Can segregate under FLPMA for 2 years while EIS is prepared.
 - All this driven by USFWS, to “avoid” listing the sage grouse as endangered
- Separate EIS begun by BLM for mineral withdrawal
- During this process CMR issued a policy recommendation letter to Governor Sandoval concerning the FEIS/LUPA on 7/8/15

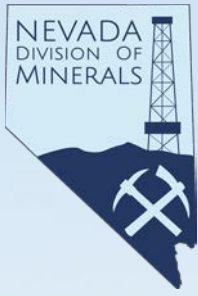
**Assessment Year 2016 Active Mining Claims
As of 10/16/2015**



**Total Active Mining Claims for
Assessment Year 2016
As of 10/16/2015 163,542
Approximate # of claims impacted
by Plan: 89,509 (55%)**

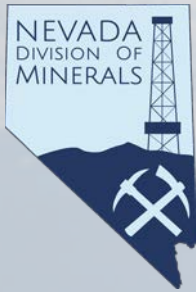
**Approximate # of claims
not directly impacted by
Plan: 74,033 (45%)**





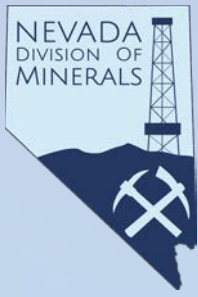
Chronology

- NDOM enlists assistance from NBMG in development of maps of high mineral, OG and Geothermal potential
- Governor's office enlists NDOM and NDOW to develop a "Nevada Alternative" to proposed SFA boundaries.
- Nevada Alternative was introduced in letter from Governor on Jan 15, 2016.
 - Nevada prefers the "no action" alternative in the EIS (no withdrawal), Sagebrush Ecosystem Council conservation credit system was set up to avoid a withdrawal.
 - Nevada Alternative is "Plan B"



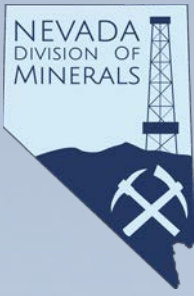
DEVELOPMENT METHOD FOR AREAS OF HIGH MINERAL POTENTIAL IN PROPOSED MINERAL WITHDRAWAL

- The process used to evaluate the area for high mineral potential (HMP) was a collaborative effort by the Nevada Bureau of Mines and Geology (NBMG) a unit of the University of Nevada, Reno, and the Nevada Division of Minerals (NDOM), a State Agency
- Development of final HMP maps a collaborative effort with NDOW and NDOM, directed by Governor's office
- CMR updated at quarterly meetings throughout the process



DEVELOPMENT METHOD FOR AREAS OF HIGH MINERAL POTENTIAL

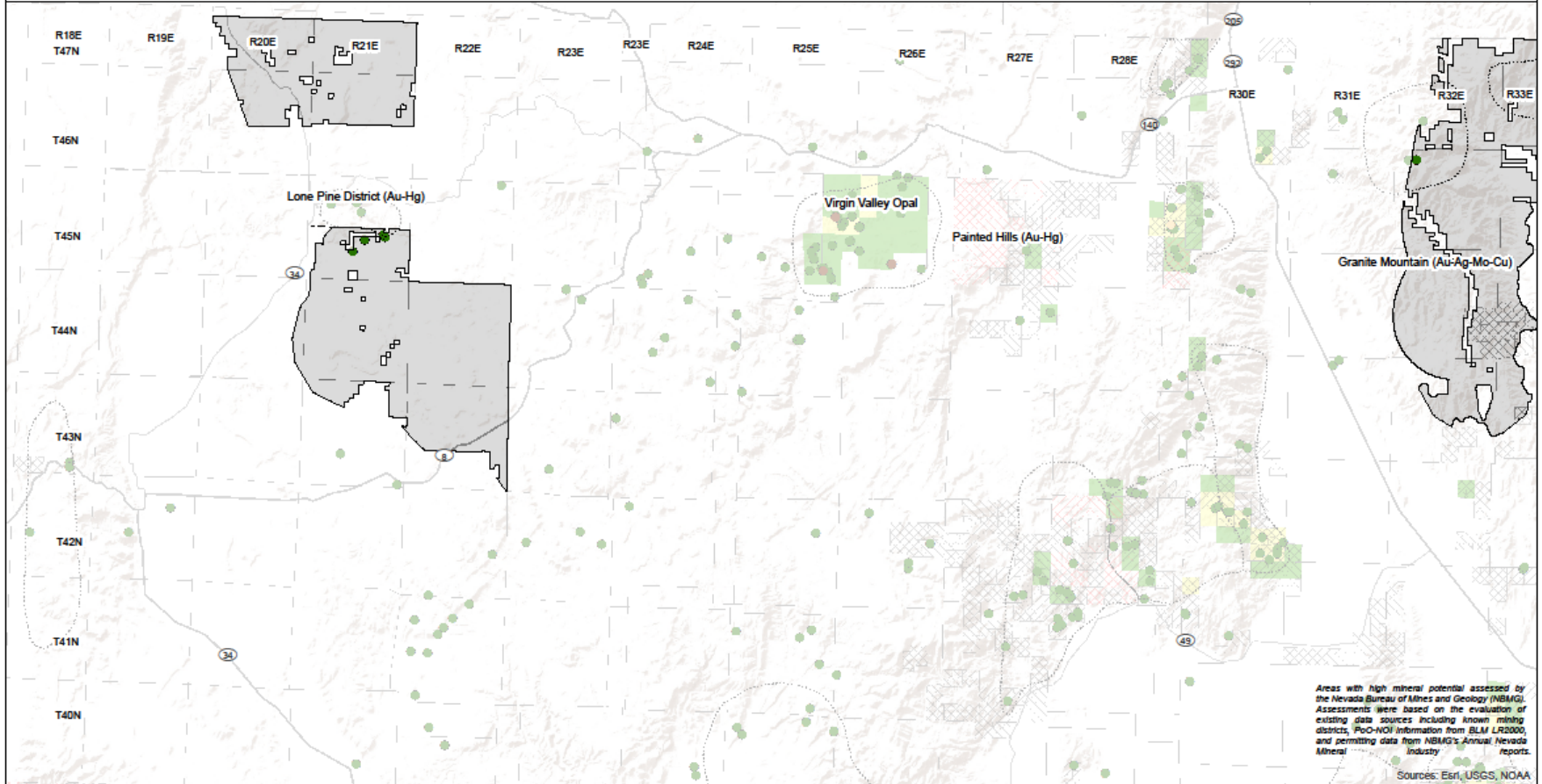
- Historic occurrences of metals and industrial minerals from NBMG archives. From historic NBMG and USGS reports and maps.
- Plans of Operations (POO's) and Notices of Intent (NOI's) for exploration and mining projects from BLM LR 2000 database
- Townships with drill projects from 2004 -2014, from annual NBMG MI reports



DEVELOPMENT METHOD FOR AREAS OF HIGH MINERAL POTENTIAL (CONT.)

- Active unpatented mining claims, from BLM LR 2000 database, 2016 assessment year.
- Discussions with active exploration and mining companies with holdings within areas.
- Discussions with NBMG specialists
- Comparison of high mineral potential maps, at township scale, with NDOW active Sage Grouse lek maps. Boundaries of high mineral potential area buffer adjusted to minimize impact on leks

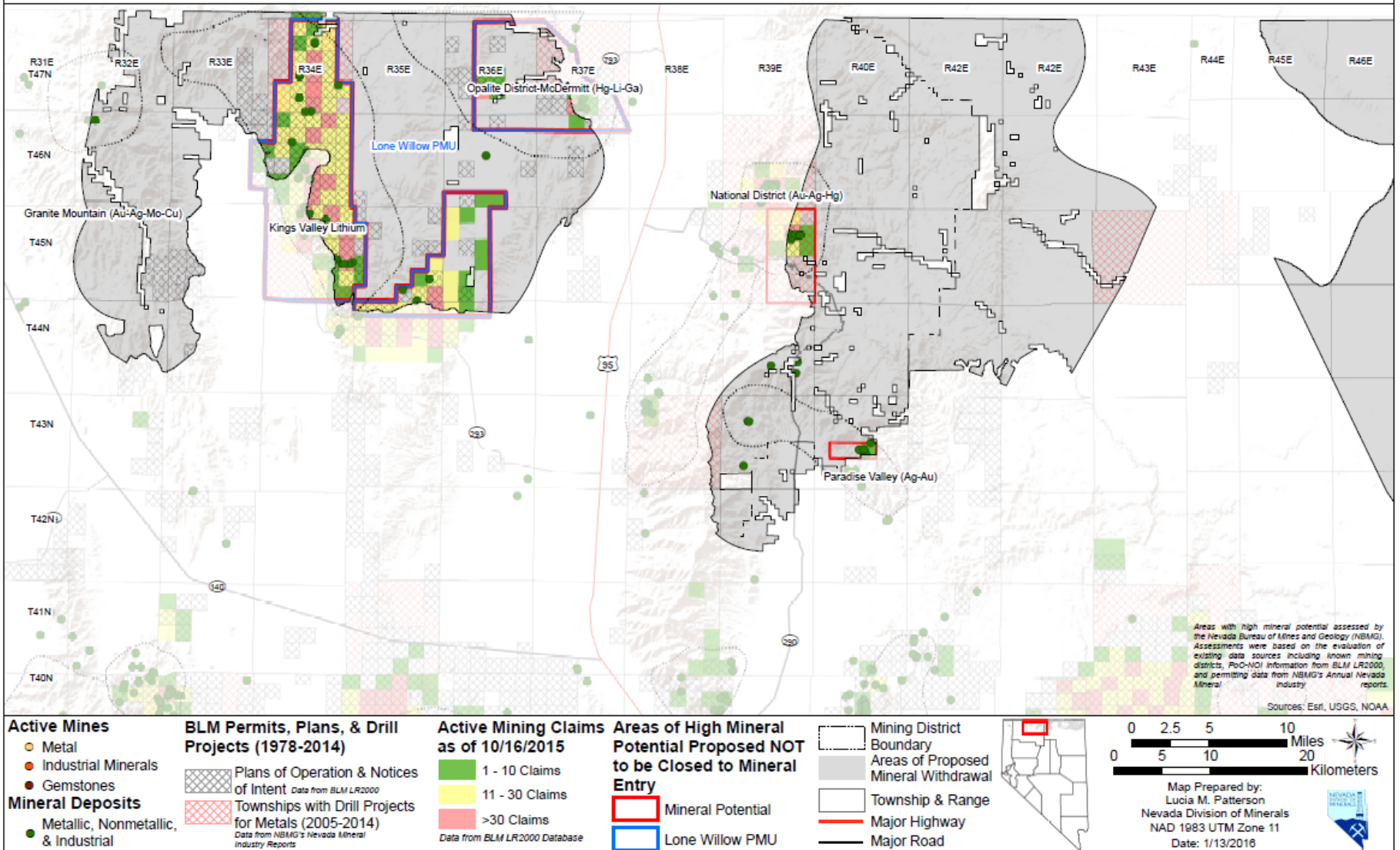
Area 1: Areas of High Mineral Potential in Nevada's Sage Brush Focal Areas with Outlined Areas Proposed NOT to be Closed to Mineral Entry



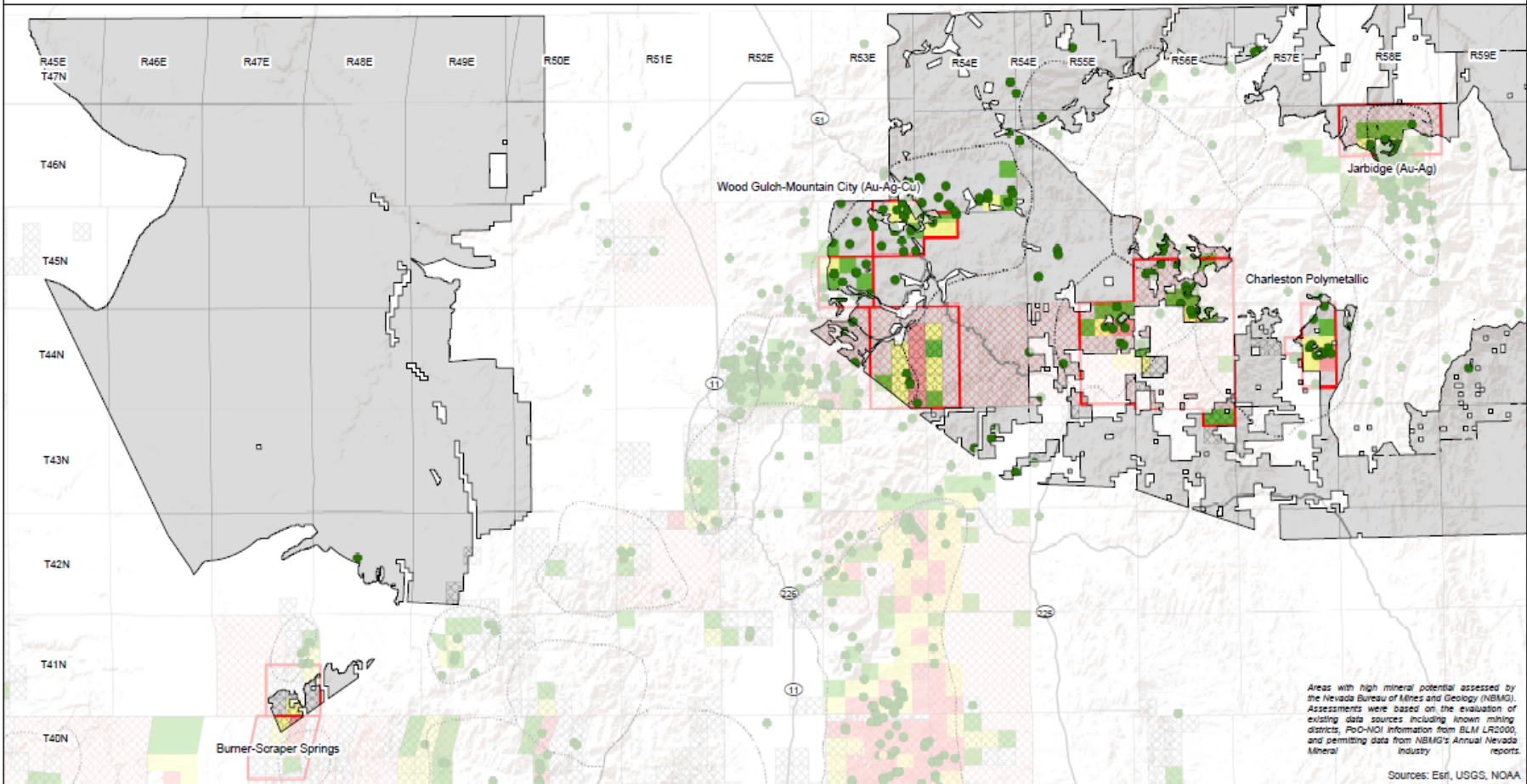
Areas with high mineral potential assessed by the Nevada Bureau of Mines and Geology (NBM&G). Assessments were based on the evaluation of existing data sources including known mining districts, POC-NOI information from BLM LR2000, and permitting data from NBM&G's Annual Nevada Mineral Industry reports.
Sources: Esri, USGS, NOAA

<p>Active Mines</p> <ul style="list-style-type: none"> ○ Metal ● Industrial Minerals ● Gemstones <p>Mineral Deposits</p> <ul style="list-style-type: none"> ● Metallic, Nonmetallic, & Industrial 	<p>BLM Permits, Plans, & Drill Projects (1978-2014)</p> <ul style="list-style-type: none"> ▨ Plans of Operation & Notices of Intent <small>Data from BLM LR2000</small> ▨ Townships with Drill Projects for Metals (2005-2014) <small>Data from NBM&G's Nevada Mineral Industry Reports</small> 	<p>Active Mining Claims as of 10/16/2015</p> <ul style="list-style-type: none"> ■ 1 - 10 Claims ■ 11 - 30 Claims ■ >30 Claims <p><small>Data from BLM LR2000 Database</small></p>	<p>Areas of High Mineral Potential Proposed NOT to be Closed to Mineral Entry</p> <ul style="list-style-type: none"> ▭ Mineral Potential ▭ Lone Willow PMU 	<p>Mining District Boundary</p> <ul style="list-style-type: none"> ▭ Areas of Proposed Mineral Withdrawal ▭ Township & Range ▬ Major Highway ▬ Major Road 	<div style="text-align: right;"> <p>Map Prepared by: Lucia M. Patterson Nevada Division of Minerals NAD 1983 UTM Zone 11 Date: 1/13/2016</p> </div>
---	--	--	---	--	---

Area 2: Areas of High Mineral Potential in Nevada's Sage Brush Focal Areas with Outlined Areas Proposed NOT to be Closed to Mineral Entry



Area 3: Areas of High Mineral Potential in Nevada's Sage Brush Focal Areas with Outlined Areas Proposed NOT to be Closed to Mineral Entry

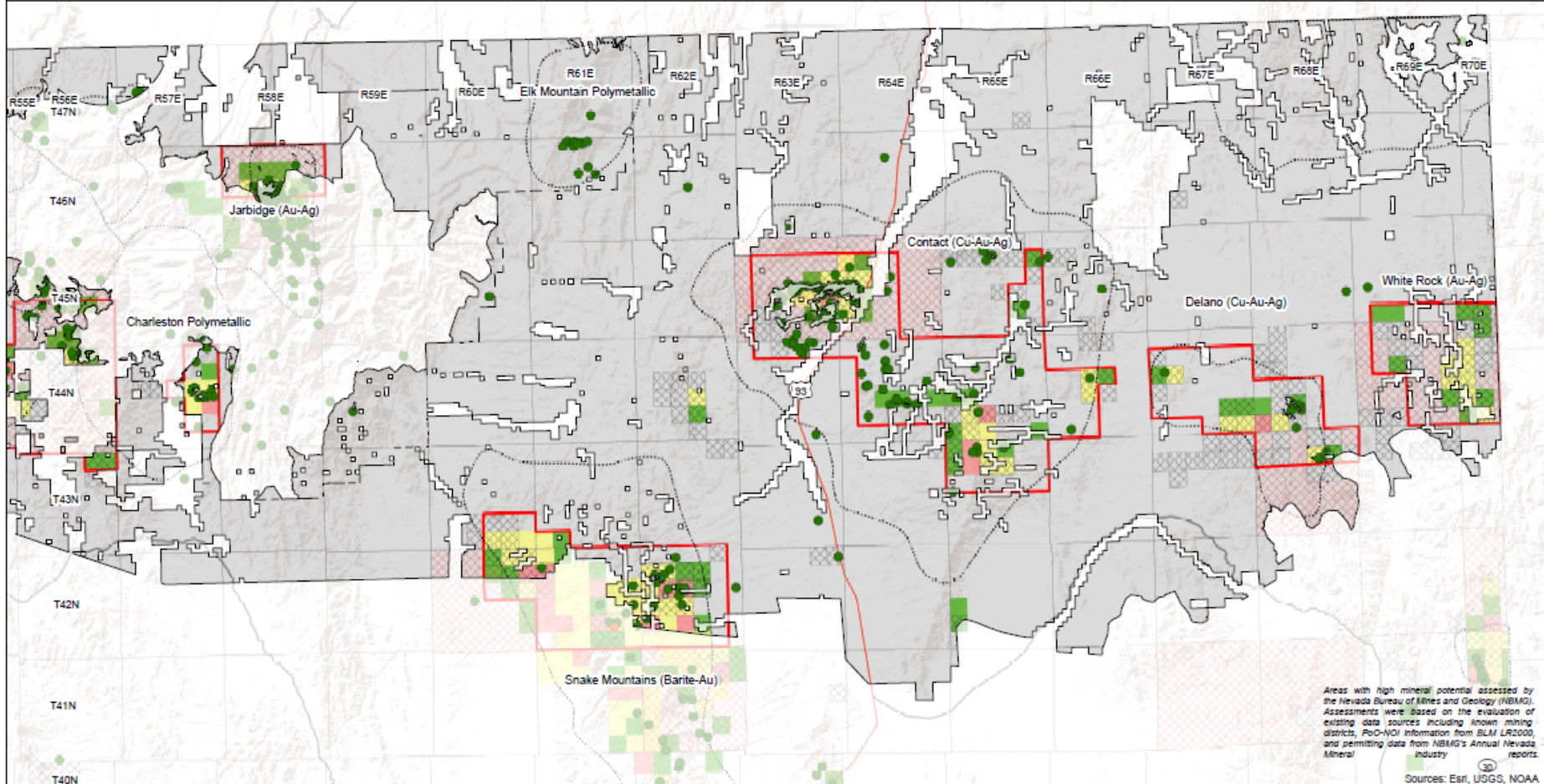


Areas with high mineral potential assessed by the Nevada Bureau of Mines and Geology (NBMG). Assessments were based on the evaluation of existing data sources including known mining districts; PoC-NDI information from BLM LR2000; and permitting data from NBMG's Annual Nevada Mineral Industry reports.

Sources: Esri, USGS, NOAA

<p>Active Mines</p> <ul style="list-style-type: none"> ● Metal ● Industrial Minerals ● Gemstones <p>Mineral Deposits</p> <ul style="list-style-type: none"> ● Metallic, Nonmetallic, & Industrial 	<p>BLM Permits, Plans, & Drill Projects (1978-2014)</p> <ul style="list-style-type: none"> ▨ Plans of Operation & Notices of Intent <small>Data from BLM LR2000</small> ▨ Townships with Drill Projects for Metals (2005-2014) <small>Data from NBMG's Nevada Mineral Industry Reports</small> 	<p>Active Mining Claims as of 10/16/2015</p> <ul style="list-style-type: none"> ■ 1 - 10 Claims ■ 11 - 30 Claims ■ >30 Claims <p><small>Data from BLM LR2000 Database</small></p>	<p>Areas of High Mineral Potential Proposed NOT to be Closed to Mineral Entry</p> <ul style="list-style-type: none"> ▭ Mineral Potential ▭ Lone Willow PMU 	<ul style="list-style-type: none"> ▭ Mining District Boundary ▭ Areas of Proposed Mineral Withdrawal ▭ Township & Range ▬ Major Highway ▬ Major Road 		<p>0 2.5 5 10 Miles</p> <p>0 5 10 20 Kilometers</p> <p>Map Prepared by: Lucia M. Patterson Nevada Division of Minerals NAD 1983 UTM Zone 11 Date: 1/13/2016</p>
---	---	--	---	---	--	---

Area 4: Areas of High Mineral Potential in Nevada's Sage Brush Focal Areas with Outlined Areas Proposed NOT to be Closed to Mineral Entry

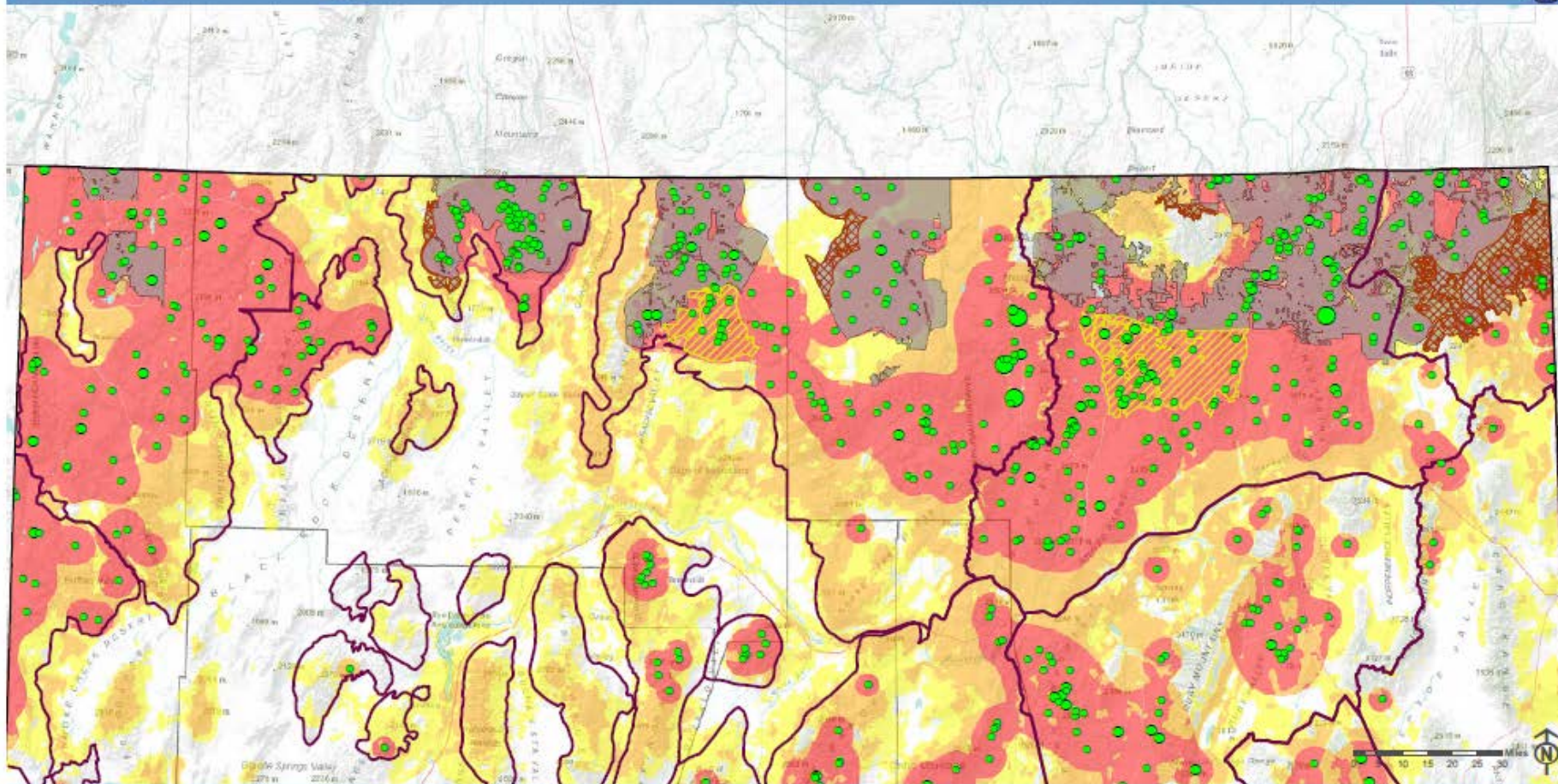


Areas with high mineral potential assessed by the Nevada Bureau of Mines and Geology (NBMG). Assessments were based on the evaluation of existing data sources including known mining districts, PoC-NOI information from BLM LR2000, and permitting data from NBMG's Annual Nevada Mineral Industry reports.

Sources: Esri, USGS, NOAA

<p>Active Mines</p> <ul style="list-style-type: none"> ● Metal ● Industrial Minerals ● Gemstones <p>Mineral Deposits</p> <ul style="list-style-type: none"> ● Metallic, Nonmetallic, & Industrial 	<p>BLM Permits, Plans, & Drill Projects (1978-2014)</p> <ul style="list-style-type: none"> ▨ Plans of Operation & Notices of Intent <small>Data from BLM LR2000</small> ▨ Townships with Drill Projects for Metals (2005-2014) <small>Data from NBMG's Nevada Mineral Industry Reports</small> 	<p>Active Mining Claims as of 10/16/2015</p> <ul style="list-style-type: none"> ■ 1 - 10 Claims ■ 11 - 30 Claims ■ >30 Claims <p><small>Data from BLM LR2000 Database</small></p>	<p>Areas of High Mineral Potential Proposed NOT to be Closed to Mineral Entry</p> <ul style="list-style-type: none"> ▭ Mineral Potential ▭ Lone Willow PMU 	<ul style="list-style-type: none"> ▭ Mining District Boundary ▭ Areas of Proposed Mineral Withdrawal ▭ Township & Range ▬ Major Highway ▬ Major Road 		<p>0 2.5 5 10 Miles</p> <p>0 5 10 20 Kilometers</p>	<p>Map Prepared by: Lucia M. Patterson Nevada Division of Minerals NAD 1983 UTM Zone 11 Date: 1/13/2016</p>
---	---	--	---	---	--	---	---

Area 1: Proposed Greater Sage-Grouse Mineral Withdrawal Areas



- Sage-Grouse Focal Areas (Sept. 2015)
- Biologically Significant Units
- Mineral Withdrawal Revisions (Jan. 2016)**
- Addition (Core Habitat)
- Removal (Limited Habitat)

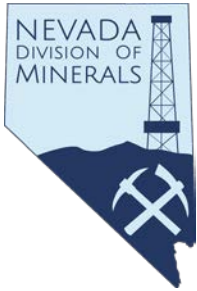
- Management Areas (Dec. 2015)**
- Priority
- General
- Other
- Active Greater Sage-Grouse Lek Sites**
- Peak males at last count**
- <35
- 35 - 100
- 100 - 200

Focal Area Revisions:
 Core Habitat Additions (49 active leks)
 393,812 acres in Priority Management Area
 270 acres in Non-Habitat
 394,082 acres total

Limited Habitat Removal (5 active leks)
 49,750 acres in Priority Management Area
 86,688 acres in General Management Area
 116,571 acres in Other Management Area
 63,041 acres in Non-Habitat
 316,050 acres total



No warranty is made by the State of Nevada as to the accuracy, reliability, or completeness of these data for individual use or aggregate use with other data.



DEVELOPMENT METHOD FOR AREAS OF HIGH MINERAL POTENTIAL

- MINERAL POTENTIAL RESULTS
- These data and records were the basis for delineation of 12 areas with high mineral potential.
- ***BIOLOGICAL AND MINERAL VALIDATION FOR THE NEVADA PROPOSED ALTERNATIVE MINERAL WITHDRAWAL AREA***, 47-page report, included with Governor's letter to Secretary of Interior, June 3, 2016 (on NDOM web .
- Method developed from this data to predict "***FORSEEABLE FUTURE MINERAL DEVELOPMENT***" in the SFA area

ONE HUNDRED ONE NORTH CARSON STREET
CARSON CITY, NEVADA 89701
OFFICE: (775) 684-5670
FAX NO.: (775) 684-5683



555 EAST WASHINGTON AVENUE, SUITE 5100
LAS VEGAS, NEVADA 89101
OFFICE: (702) 486-2500
FAX NO.: (702) 486-2505

Office of the Governor

June 3, 2016

The Honorable Sally Jewell
Secretary of the Interior
Department of the Interior
1849 C Street, NW
Washington, D.C. 20240

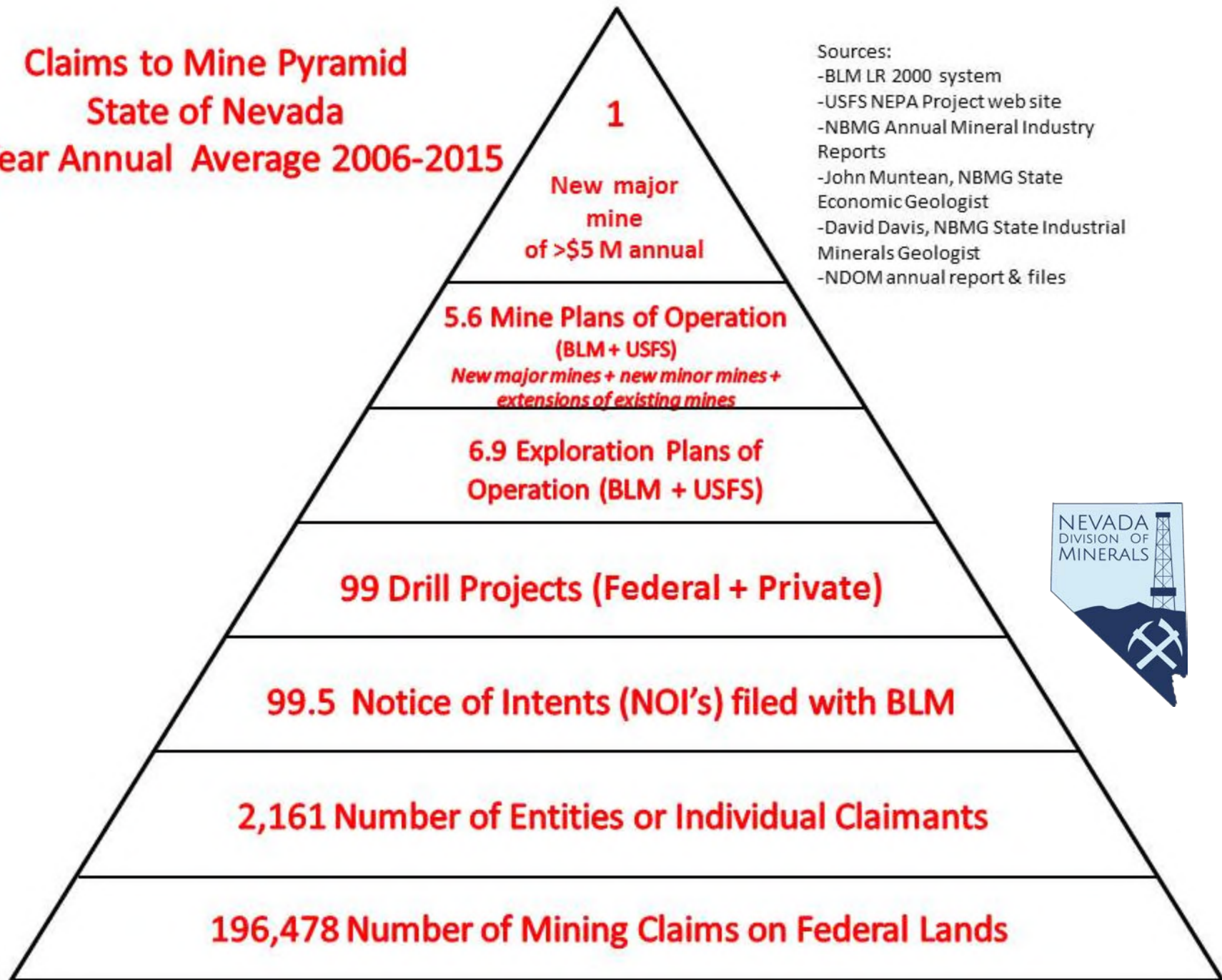
Re: Biological and Mineral Analysis of Nevada's Proposed Alternative Mineral Withdrawal Boundary

Dear Secretary Jewell:

Enclosed is the additional information you requested when we met in Washington, D.C. on Nevada's proposed alternative to the mineral withdrawal boundary (Nevada Alternative). I appreciate the ongoing discussion on Nevada's concerns regarding the Greater Sage-grouse, specifically on my proposed withdrawal boundary revisions.

I want to reiterate that I do not think the mineral withdrawal proposed for the Sagebrush Focal Area (SFA) is necessary and that the withdrawal will not address the most significant risks to Greater Sage-grouse habitat in Nevada. I've seen no justification by the Bureau of Land Management (BLM), the U.S. Fish and Wildlife Service (FWS), or the Western Association of Fish and Wildlife Agencies (WAFWA) that explains or quantifies the threat of mining and mining exploration on Greater Sage-grouse in Nevada; identifies mining and exploration as a significant risk to conservation of the species; or describes the process and reasoning for the proposed SFA boundaries. That being said, I am pleased you acknowledge the merits of the Nevada Alternative as evidenced by your request for additional information.

**Claims to Mine Pyramid
State of Nevada
10-Year Annual Average 2006-2015**

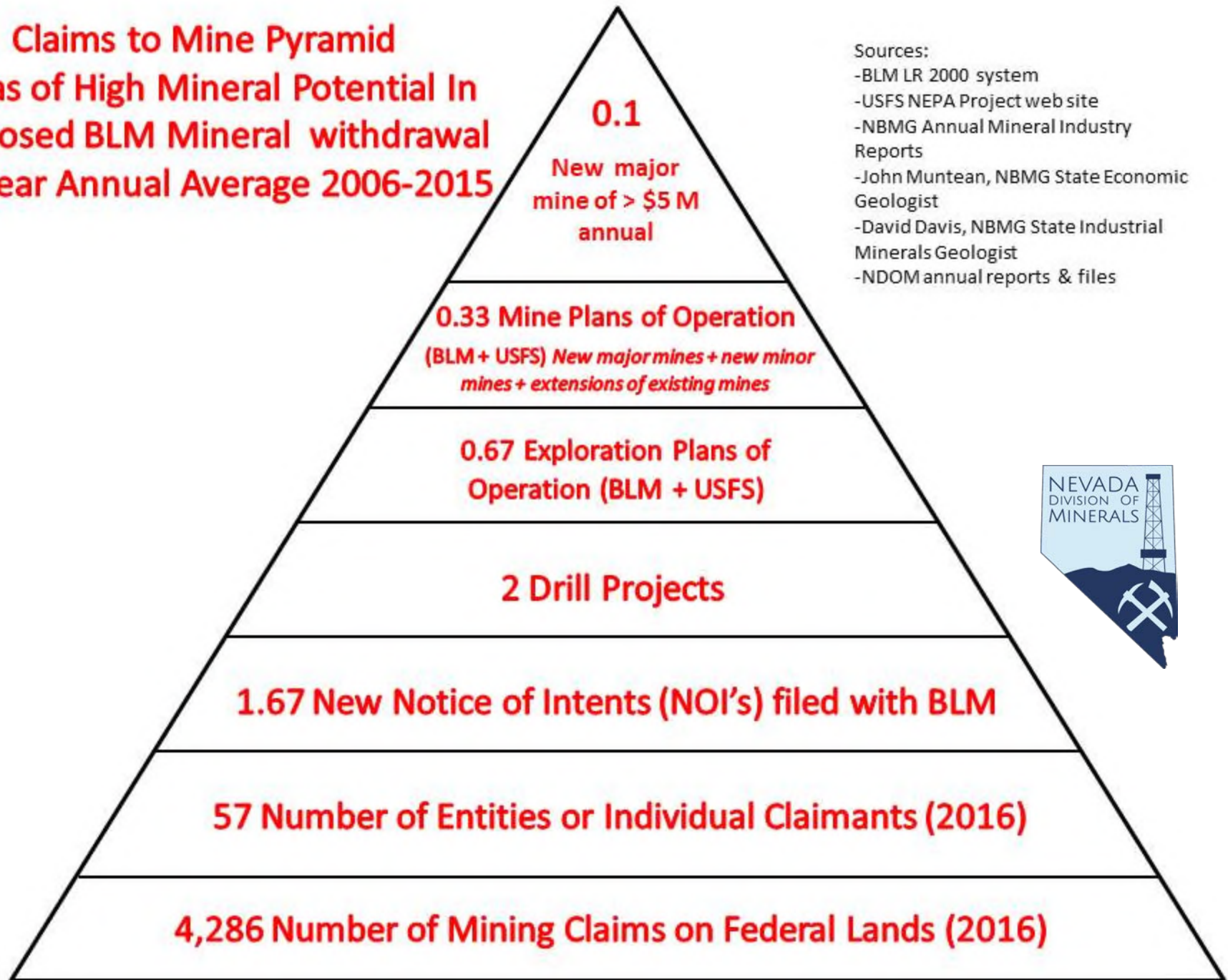


Sources:

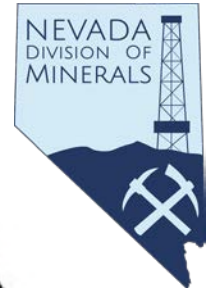
- BLM LR 2000 system
- USFS NEPA Project web site
- NBMG Annual Mineral Industry Reports
- John Muntean, NBMG State Economic Geologist
- David Davis, NBMG State Industrial Minerals Geologist
- NDOM annual report & files



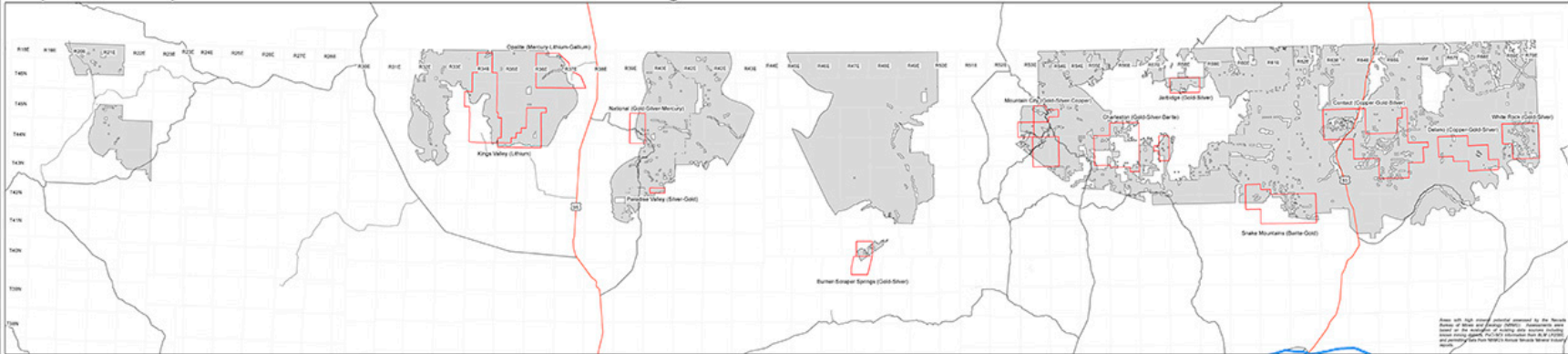
**Claims to Mine Pyramid
Areas of High Mineral Potential In
Proposed BLM Mineral withdrawal
10-Year Annual Average 2006-2015**



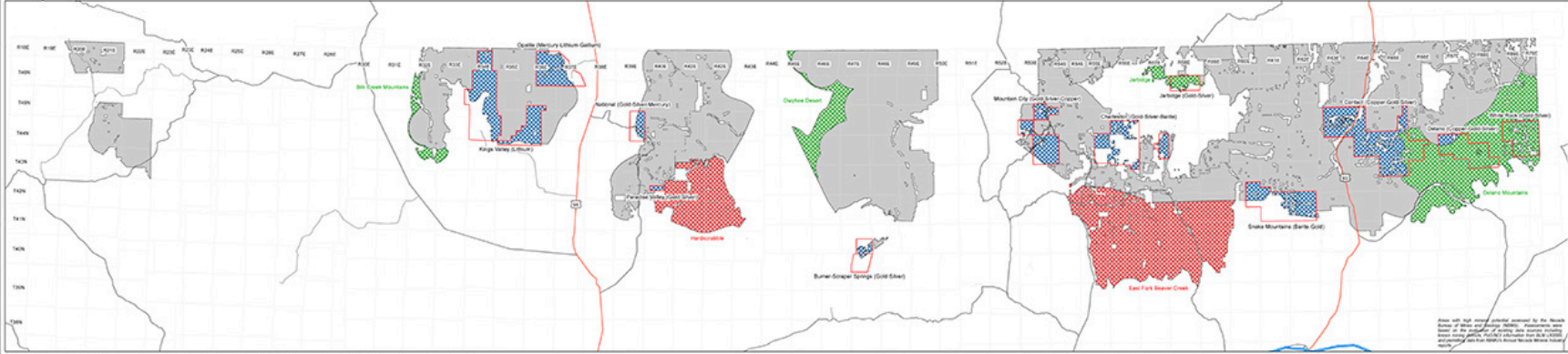
- Sources:
- BLM LR 2000 system
 - USFS NEPA Project web site
 - NBMG Annual Mineral Industry Reports
 - John Muntean, NBMG State Economic Geologist
 - David Davis, NBMG State Industrial Minerals Geologist
 - NDOM annual reports & files



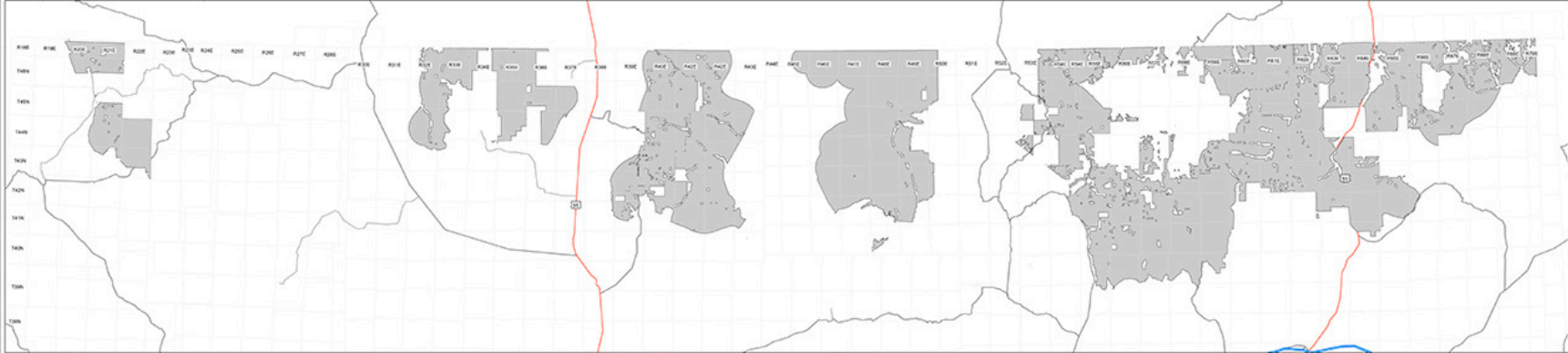
Map 1. BLM Proposed Mineral Withdrawal Areas and Areas with High Mineral Potential in Northern Nevada



Map 2. NDOW & NDOM Recommended Additions to and Exclusions from the Mineral Withdrawal Area

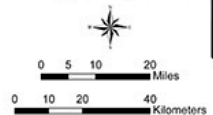


Map 3. Nevada Proposed Mineral Withdrawal Area



Legend

-  NDOW Addition (Priority Core Habitat)
-  NDOW Removal (Limited Habitat)
-  NDOMNSMG Areas to be Excluded from Mineral Withdrawal
-  SFA Boundary
-  Areas of High Mineral Potential
-  Township & Range
-  Major Highway
-  Major Road



Acreage Summary	
2,730,045 Acres	Original SFA Mineral Withdrawal Boundary
+ 394,082 Acres	NDOW Addition (Priority Core Habitat)
- 317,270 Acres	NDOW Removal (Limited Habitat)
- 237,671 Acres	NDOMNSMG Removal (Areas With High Mineral Potential)
2,569,272 Acres	Proposed Nevada Mineral Withdrawal Area

Map Prepared by:
Lucia M. Patterson
Nevada Division of Minerals
NAD 1983 UTM Zone 11
Date: 4/22/2016



NET CHANGE IN NEVADA ALTERNATIVE vs. PROPOSED SFA

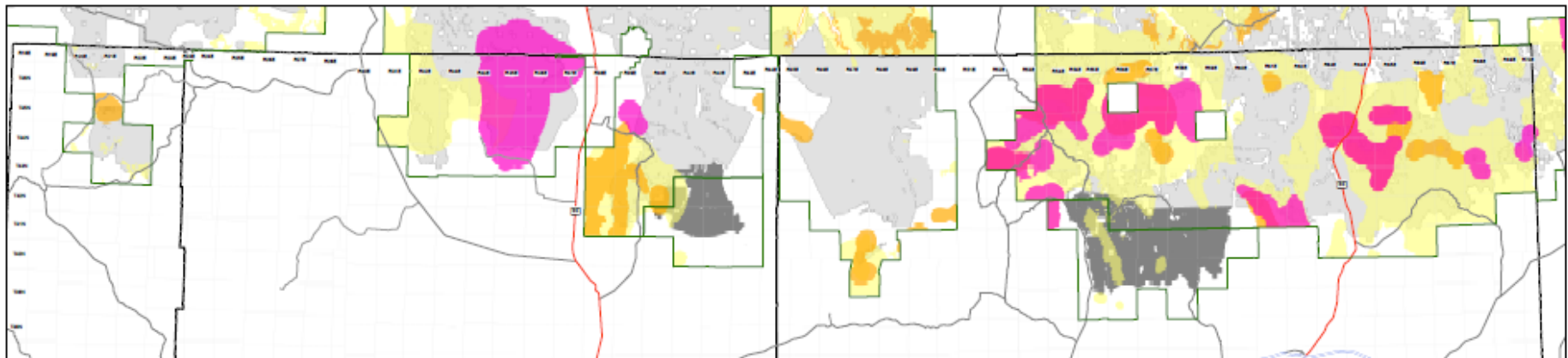
Acreage Summary

2,730,045 Acres	Original SFA-Mineral Withdrawal Boundary
+ 394,082 Acres	NDOW Addition (Priority (Core) Habitat)
- 317,270 Acres	NDOW Removal (Limited Habitat)
- 237,671 Acres	NDOM/NBMG Removal (Areas With High Mineral Potential)
<hr/>	
2,569,272 Acres	Proposed Nevada Mineral Withdrawal Area

USGS SaMiRA Study, required under FLPMA Title II, Sec 204 The Secretary must provide a report on mineral deposits, claims, leases, potential and market demand to Congress if a withdrawal is recommended.

- USGS was chosen to prepare this report
- 61 USGS personnel worked on 244 page report
- Available on USGS web site: <https://pubs.er.usgs.gov/publication/fs20163074>

USGS SaMiRA Mineral Resource Assessment



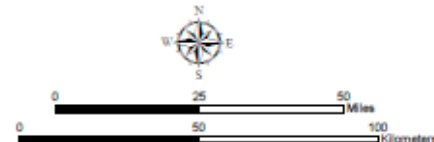
Legend

- SaMiRA High Mineral Potential
- SaMiRA Moderate Mineral Potential
- SaMiRA Low Mineral Potential
- Proposed Mineral Withdrawal
- Proposed Additions to Mineral Withdrawal

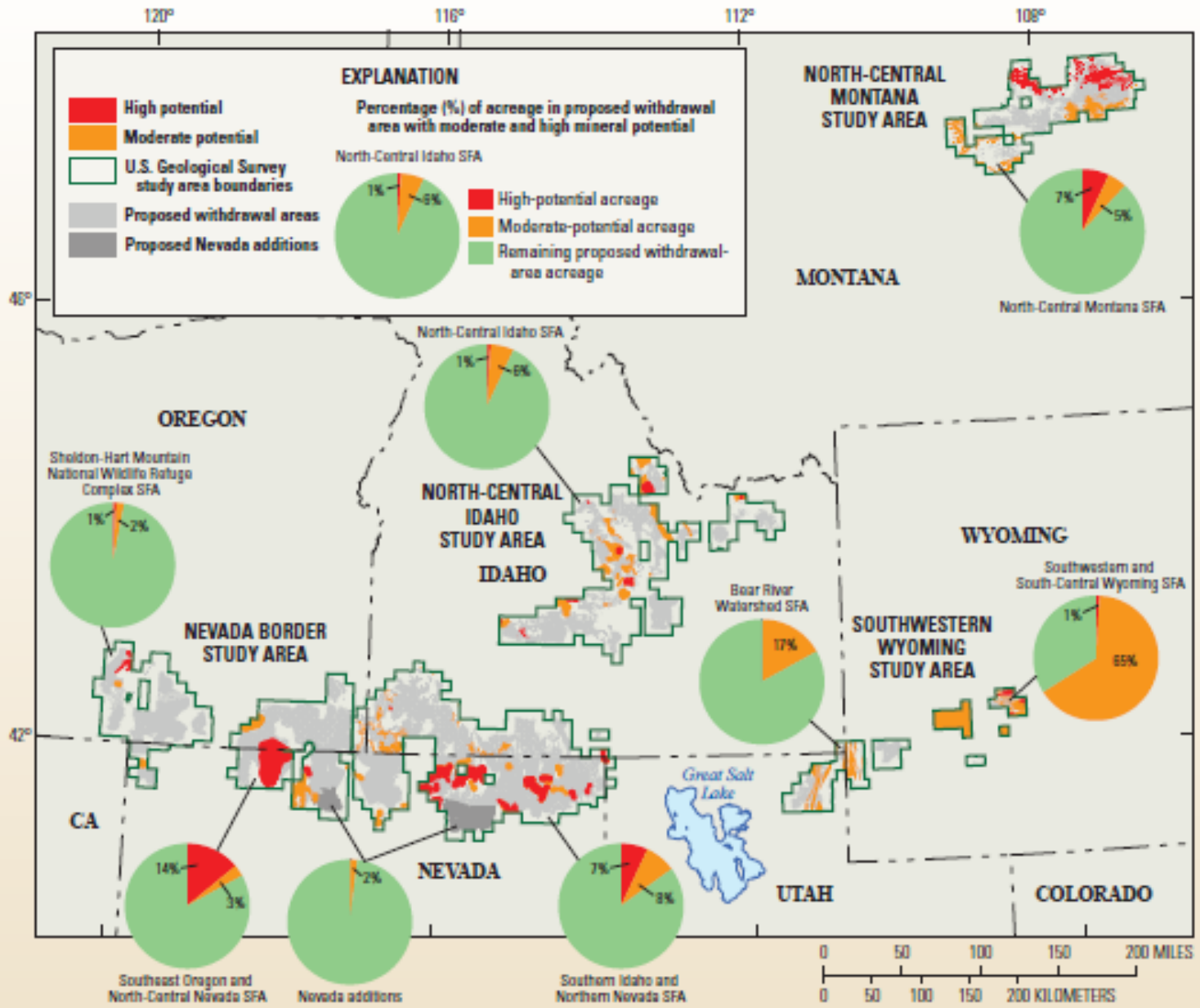
- SaMiRA Study Area Boundary
- County Boundary
- Township & Range
- Major Highway
- Major Road

Map Prepared by:
Lucia M. Patterson
Nevada Division of Minerals
NAD 1983 UTM Zone 11

Date: 10/11/2016



Potential for Locatable Minerals in Proposed Withdrawal Areas



From USGS Fact Sheet 2016-3074, October, 2016

Summary

- Nevada Alternative submitted in EIS process
- Nevada Alternative would remove areas of high mineral potential, 99 % of active claims within.
- USGS SaMiRA study validates Nevada Alternative
- Draft EIS to public expected late December, 2016
- Goal: Nevada Alternative as the preferred alternative in draft EIS.
- Final EIS by September, 2017 (end of 2-year segregation)
- Interior Secretary decides on final EIS



State of Nevada
Commission on Mineral Resources
Division of Minerals



NV.gov

[Agencies](#) [Jobs](#) [About Nevada](#)

ADA Americans with Disabilities Act

[HOME](#) [ABOUT US](#) [COMMISSION](#) [PROGRAMS](#) [NEWS](#) [FAQS](#) [CONTACT US](#)



Governor Brian Sandoval cutting the ribbon at the grand opening of Newmont's Long Canyon gold mine in Elko County, Nevada on September 28, 2016.

Current Information

- > [EPA Rulemaking of CERCLA 108\(b\) Financial Assurance Requirements](#)
- > [Increase to Mining Claim Fees Now In Effect](#)
- > [Information Related to Proposed Land Withdrawals](#)
- > [Information Related to Sage Grouse Management Plan and Proposed Mineral Withdrawal; Includes Governor's Letters](#)

Important Links

- [Increase in Mining Claim Fees Now In Effect](#)
Effective July 1, 2016, mining claim filing fees paid to County Recorders have increased from \$8.50 to \$10 per claim.
NAC 513 regulation update R127-15
- [State and Federal Permits Required Before Mining or Milling Can Begin - February 2015](#)
- [NDOM YouTube Channel](#)
- [Nevada Bureau of Mines and Geology](#)

Public Workshop(s) and Hearings(s)

- There are currently no scheduled public workshops or hearings.